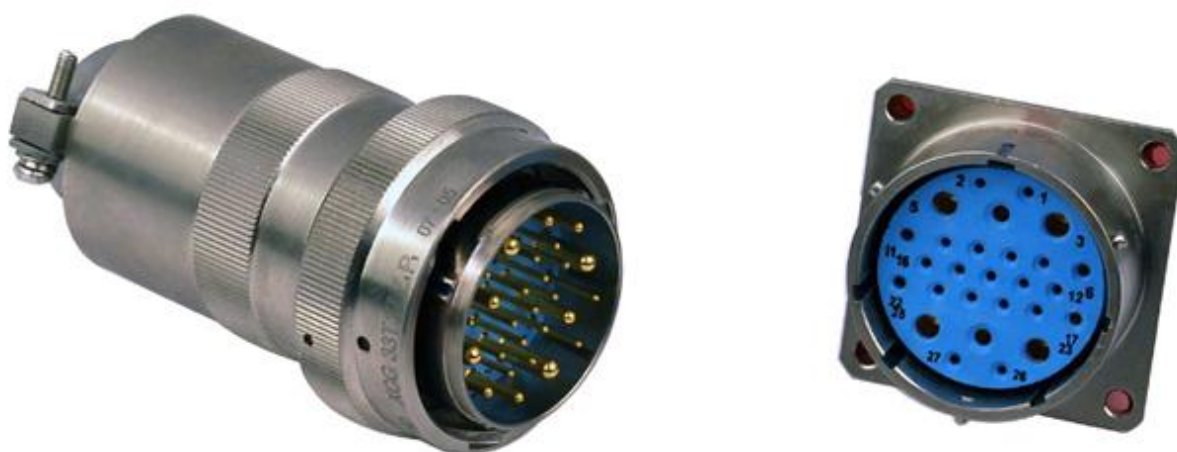


## XCG series circular electrical connector



Conform to Chinese military connector standard GJB2889, XCG series is extended from XC series, designed as bayonet coupling, solder or crimp springtac contact. The family can be mated with XC series.

## Part number

	XCG	14	F	4	Z	P <sub>1</sub>	W
Basic series							
Shell size							
18, 22, 24, 27, 30, 33, 36, 39							
Type of plug and receptacle							
T = Plug							
F = Square flange receptacle							
Number of contact							
01 ~ 62							
Type of contact							
Z = Pin with silver plating							
Z <sub>1</sub> = Pin with gold plating							
K = Socket with silver plating							
K <sub>1</sub> = Socket with gold plating							
Shell plating and back shell							
Omit = Black anodized without thread							
D <sub>1</sub> = Electroless nickel plating without thread							
D <sub>3</sub> = Olive-drab zinc plating passivated without thread							
E = Black anodized with thread							
P <sub>1</sub> = Electroless nickel plating with thread							
P <sub>3</sub> = Olive-drab zinc plating passivated with thread							
Orientation							
N, W, X, Y, Z							
Omit = N							

## Performance specification

Operating temperature: -55 °C ~ +200 °C

Relative humidity: at 40 ± 2 °C, 90% ~ 95%

Working height: ≤ 3000 m

Vibration: at 10 ~ 2000 Hz, acceleration: 196 m/s<sup>2</sup>

Endurance: ≥ 1000 cycles

## Electrical performance

Rated voltage, withstanding voltage and insulation resistance

Operating environment	Rated voltage (v)	Withstanding voltage (v)	Insulation resistance (MΩ)
Normal	500	≥ 1500	≥ 5000
Hot and humid	500	≥ 750	≥ 100
Low pressure (1KPa)	150	≥ 200	---

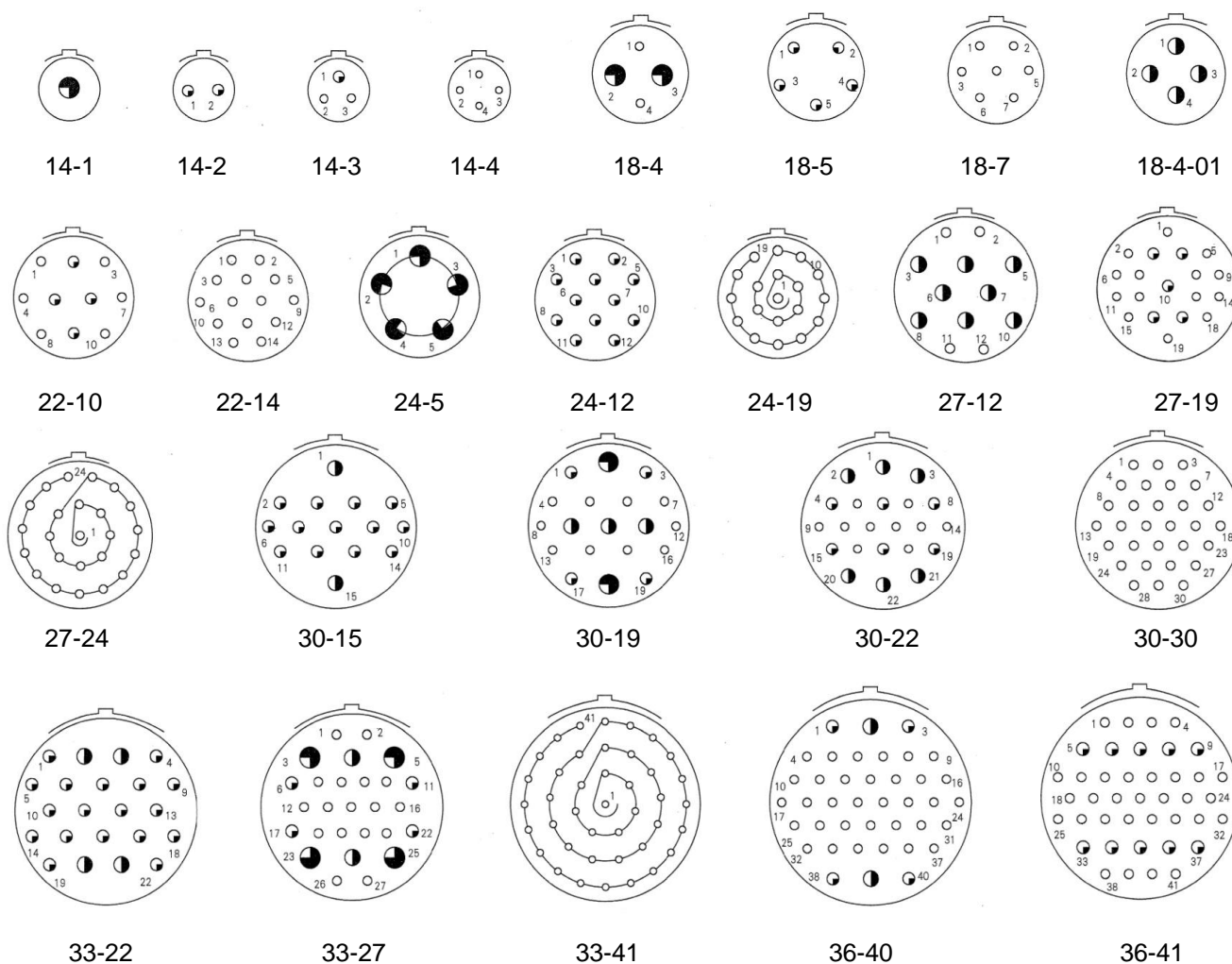
## Contact resistance and rated current

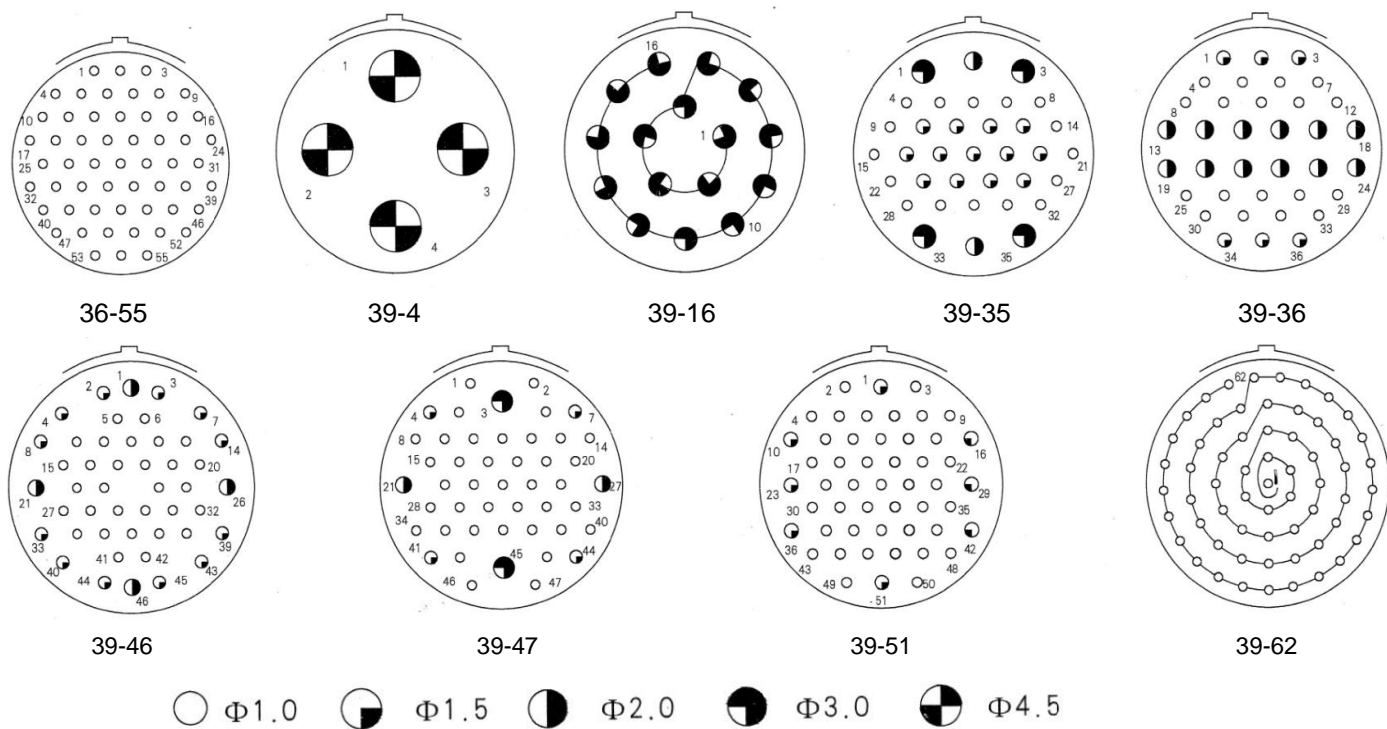
Contact No.	Resistance (mΩ)	Rated current (A)
Φ 1.0	≤ 5.0	5
Φ 1.5	≤ 2.5	10
Φ 2.0	≤ 1.25	20
Φ 3.0	≤ 0.75	40
Φ 4.5	≤ 0.35	65

## Diameter of Contact Solder Hole (mm)

Specification (mm)	Diameter (mm)
Φ 1.0	1.5
Φ 1.5	2.0
Φ 2.0	2.5
Φ 3.0	3.0
Φ 4.5	4.5

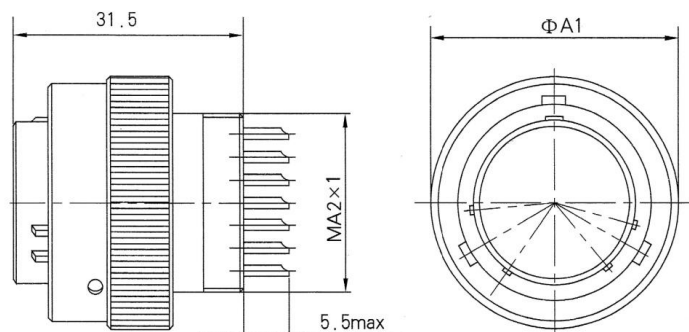
## Contact layout





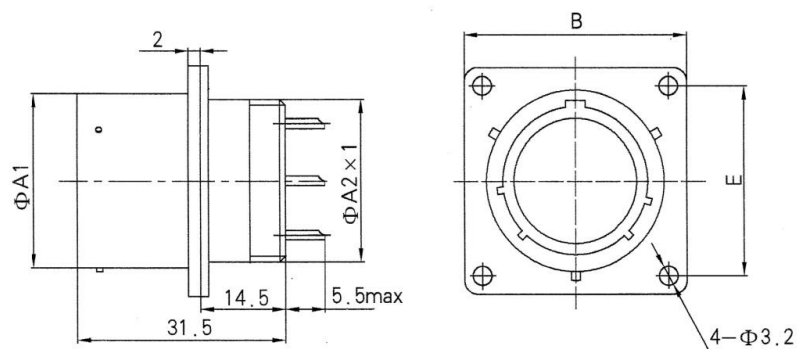
## Shell size

### Plug



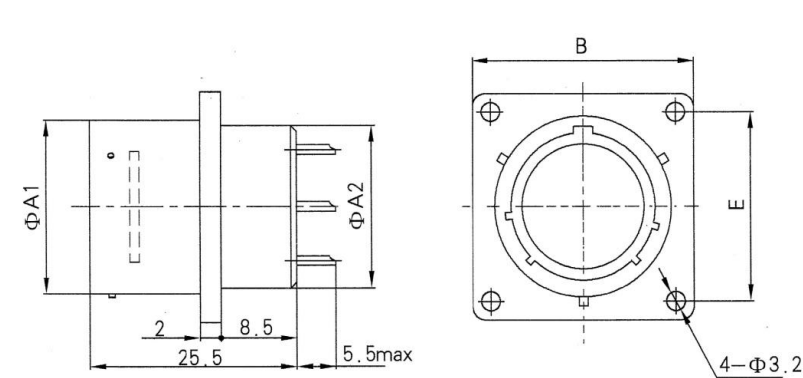
Shell size	A1	A2
14	24	14
18	28	18
22	32	22
24	34	24
27	37	27
30	40	30
33	43	33
36	46	36
39	49	39

### Square flange receptacle with thread



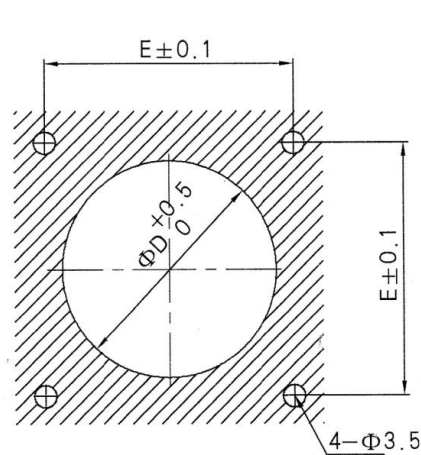
Shell size	A1	A2	B	E
14	15.7	14	25.0	19.0
18	19.7	18	27.5	21.5
22	23.7	22	30.0	24.0
24	25.7	24	32.0	26.0
27	28.7	27	34.5	28.0
30	31.7	30	36.5	30.0
33	34.7	33	39.5	32.5
36	37.7	36	41.0	34.0
39	40.7	39	43.0	36.0

Square flange receptacle without thread



Shell size	A1	A2	B	E
14	15.7	14	25.0	19.0
18	19.7	18	27.5	21.5
22	23.7	22	30.0	24.0
24	25.7	24	32.0	26.0
27	28.7	27	34.5	28.0
30	31.7	30	36.5	30.0
33	34.7	33	39.5	32.5
36	37.7	36	41.0	34.0
39	40.7	39	43.0	36.0

Suggestion size



Shell size	D	E
14	14.5	19.0
18	18.5	21.5
22	22.5	24.0
24	24.5	26.0
27	27.5	28.0
30	30.5	30.0
33	33.5	32.5
36	36.5	34.0
39	39.5	36.0