

## CXCH series circular electrical connector



Conform to Chinese military connector standard GJB2889, CXCH series is extended from XC series, designed as bayonet coupling, solder or crimp springtac contact.

## Part number

	CXCH	14	F	4	Z	P <sub>1</sub>	W
Basic series							
Shell size							
14, 18, 22, 24, 27, 30, 33, 36, 39							
Type of plug and receptacle							
T = Plug							
F = Square flange receptacle							
Number of contact							
01 ~ 62							
Type of contact							
Z = Pin with silver plating							
Z <sub>1</sub> = Pin with gold plating							
K = Socket with silver plating							
K <sub>1</sub> = Socket with gold plating							
Shell plating and back shell							
Omit = Black anodized without thread							
D <sub>1</sub> = Electroless nickel plating without thread							
D <sub>3</sub> = Olive-drab zinc plating passivated without thread							
E = Black anodized with thread							
P <sub>1</sub> = Electroless nickel plating with thread							
P <sub>3</sub> = Olive-drab zinc plating passivated with thread							
Orientation							
N, W, X, Y, Z							
Omit = N							

## Performance specification

Operating temperature: -55 °C ~ +200 °C

Relative humidity: at 40 ± 2 °C, 90% ~ 95%

Working height: ≤ 3000 m

Vibration: at 10 ~ 2000 Hz, acceleration: 196 m/s<sup>2</sup>

Endurance: ≥ 1000 cycles

## Electrical performance

### Contact resistance and rated current

Contact No.	Resistance (MΩ)	Rated current (A)	Inside diameter of contact (mm)
Φ 1.0	≤ 5.00	5	Φ 1.5
Φ 1.5	≤ 2.50	10	Φ 2.0
Φ 2.0	≤ 1.25	20	Φ 2.5
Φ 3.0	≤ 0.75	40	Φ 3.0

## Rated voltage and withstanding voltage

Operating environment	Rated voltage (v)	Withstanding voltage (v)
Normal	500	≥ 1500
Hot and humid	500	≥ 1125

## Insulation resistance (MΩ)

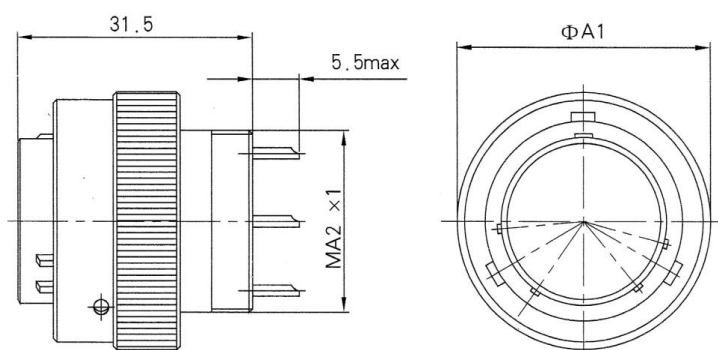
Environment	Normal	Heat	Hot and humid
Insulation resistance	≥ 5000	≥ 1000	≥ 100

## Contact layout

Same as XC series.

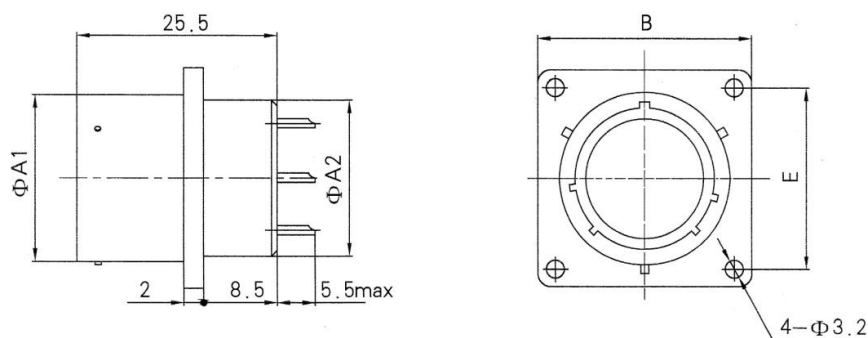
## Shell size

### Plug



Shell size	A1	A2
14	24	14
18	28	18
22	32	22
24	34	24
27	37	27
30	40	30
33	43	33
36	46	36
39	49	39

### Square flange receptacle



Shell size	A1	A2	B	E
14	15.7	14	25.0	19.0
18	19.7	18	27.5	21.5
22	23.7	22	30.0	24.0
24	25.7	24	32.0	26.0
27	28.7	27	34.5	28.0
30	31.7	30	36.5	30.0
33	34.7	33	39.5	32.5
36	37.7	36	41.0	34.0
39	40.7	39	43.0	36.0