

J45D series rectangle electrical connector



The family of connector is designed as a standard module, it can be fit together according to requirement. Its contact has two types: springtac socket and leaf spring. Type of termination is by dip solder, solder or crimp.

Part number

	J45D-	nM	T	J	H	J	nDM	nXM
Basic series								
Module number n = Unit module number								
Type of connector Z = Receptacle T = Plug								
Type of contact J = Pin K = Springtac socket K ₁ = Leaf spring socket								
Type of termination B = PCB Y = Crimp H = Solder								
Finish J = Gold plating Omit = Silver plating								
Number of bulky module n = Module number								
Number of small module n = Module number								

Performance specification

Temperature: -55 °C ~ +105 °C

Relative humidity: 40 °C, 95%

Vibration: 10Hz ~ 500Hz, acceleration 98 m/s²

Shock: 294 m/s²

Endurance: ≥ 1000 cycles

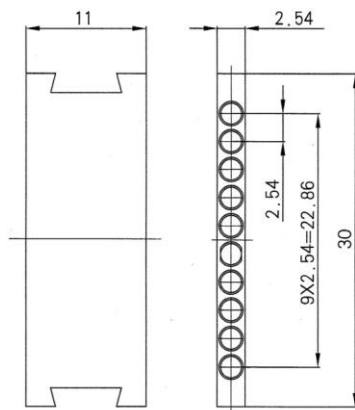
Insulation resistance: Normal ≥ 5000 MΩ; Hot and humid ≥ 10 MΩ

Electrical performance

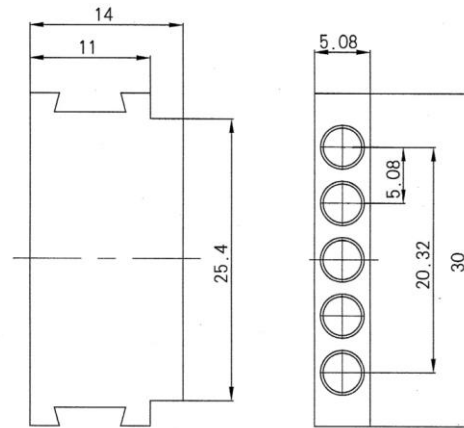
Contact diameter (mm)	Contact resistance (Ω)	Working current (A)	Withstanding voltage (V)	Rated voltage (V)
Φ 0.6	≤ 0.003	3	1000	300
Φ 1.5	≤ 0.00125	9	1500	500

Shell size

Small module

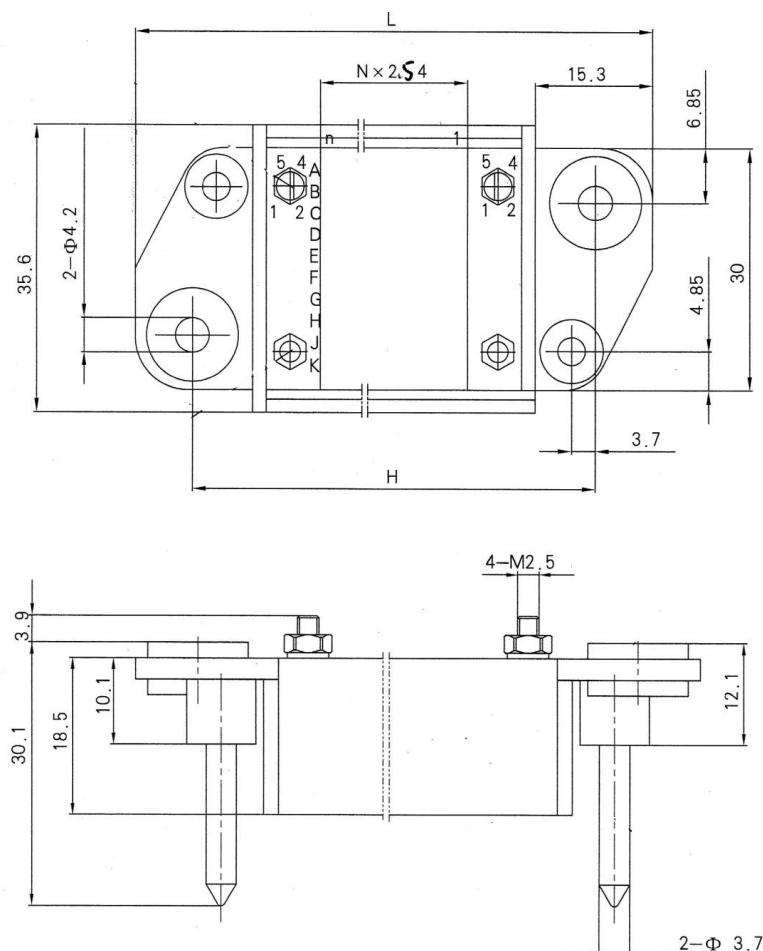


bulky module

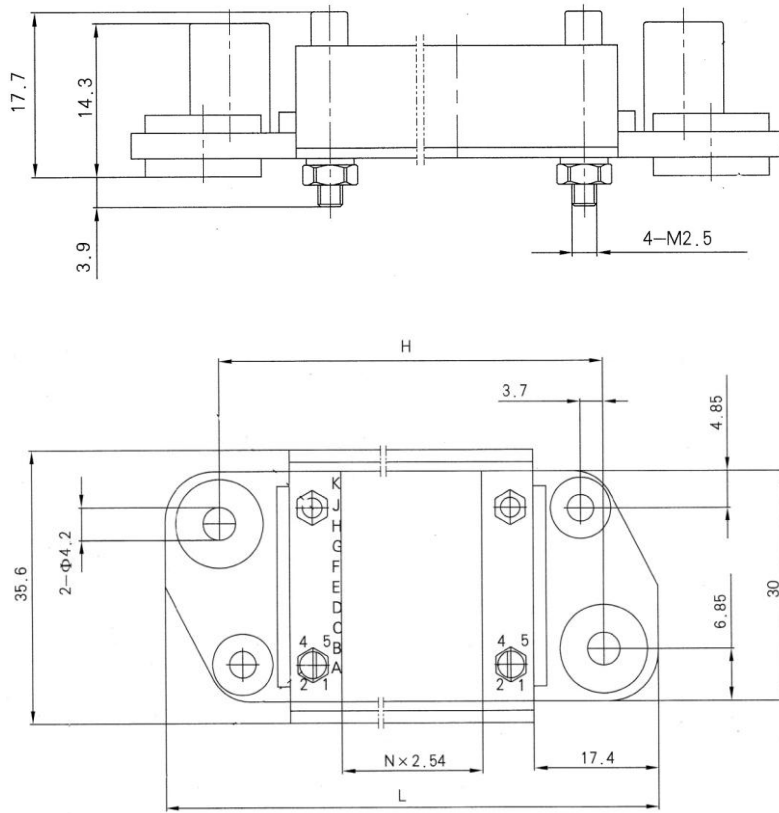


Note: Small module can admit $10 * \Phi 0.6$ and bulky module can admit $5 * \Phi 1.5$

Plug



Receptacle



Module number	H	L	Module number	H	L
7	50.78	65.38	23	91.42	106.02
9	55.86	70.46	27	101.58	116.18
11	60.96	75.56	31	111.74	126.34
15	71.10	85.70	35	121.90	136.50
18	78.72	93.32	52	165.08	179.68
19	81.26	95.86			