

YW series circular connector



This family of connector are integrated on RJ45, USB, Mini USB and 1394 in the standard circular connector. Their size and performance conform to MIL-C-26482, MIL-DTL-38999.

Part number

	YW	1	-10	F	01	S	01
Basic series							
Style							
1 = Bayonet coupling							
3 = Triple start thread							
Type of plug and receptacle							
10 = Straight plug							
20 = Flange receptacle							
22 = Double bayonet coupling, flange mounting with thru bulkhead receptacle							
23 = Nut receptacle							
24 = Single bayonet coupling, screw mounting receptacle							
Finish							
F = Electroless nickel plating							
B = Cadmium plating							
E = Stainless steel passivated							
H = Black							
L = Olive green							
Type of Internal Interface							
01 = RJ45							
02 = USB							
03 = 1394							
04 = Mini USB							
Terminal of supporting the wire bundle							
B = Straight solder							
W = 90° elbow solder							
S = Solder by cable							
Omit = Crimp							
Back shell							
01 = Straight spring guard hermetic							
02 = Straight heat shrinkable sleeve and hermetic							

Performance specification

Temperature Rating: -55 °C ~ +125 °C

Relative humidity: at 40 °C, 90% ~ 95%

Vibration: 10 HZ ~ 2000 Hz, acceleration 147 m/s²

Shock: 490 m/s²

Endurance: ≥ 500 cycles

Electrical performance

Operating voltage:

150 V (RJ45)

30 V (USB, Mini USB)

40 V (1394)

Operating current:

1.5 A (RJ45)

1 A (USB, Mini USB)

1.5 A (1394)

Contact resistance:

≤ 20 MΩ (RJ45)

≤ 30 MΩ (USB)

≤ 50 MΩ (1394, Mini USB)

Insulation resistance:

≥ 5000 MΩ

Withstanding voltage:

1000v (RJ45)

500v (USB, Mini USB, 1394)

Data transferring:

RJ45:

Loss: 0.3dB (100MHz)

Crosstalk: 40dB (100MHz)

Impedance: 100Ω

Transferring speed: 1000Mbps

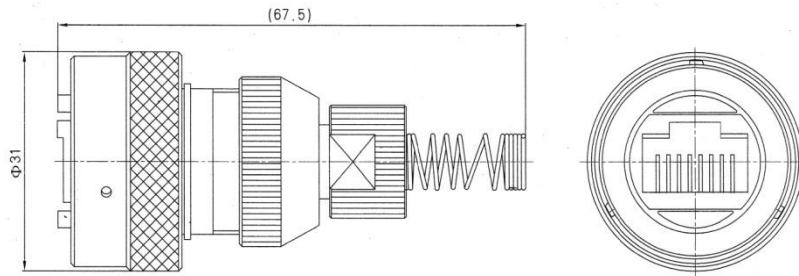
USB and 1394:

Conform to USB2.0 and IEEE1394

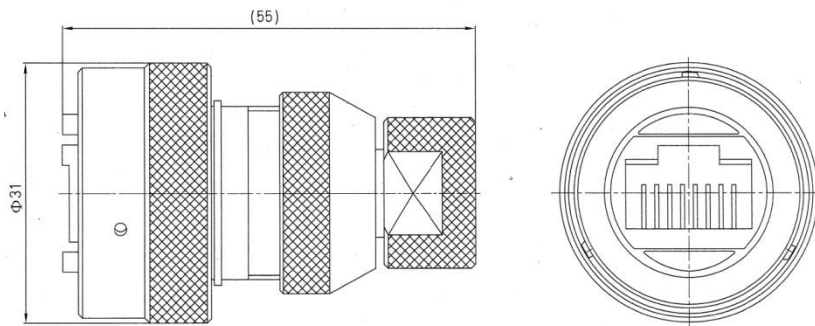
Shell size

J45

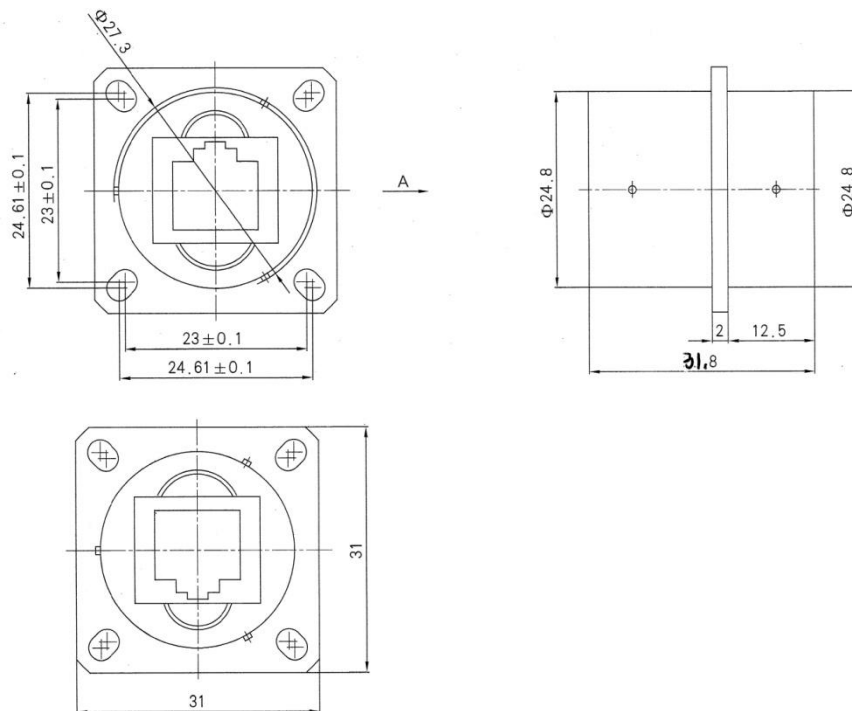
YW1-10F01-01



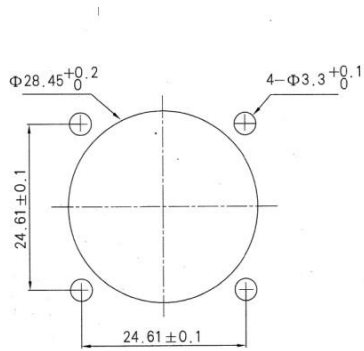
YW1-10F01-02



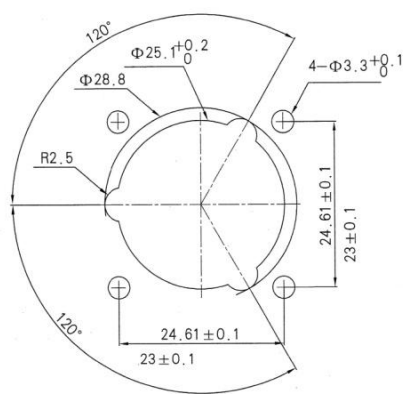
YW1-22F01



Type I

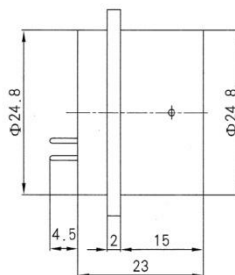
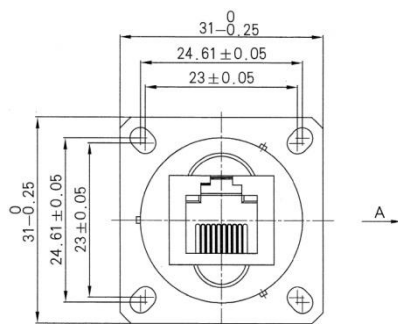


Type II

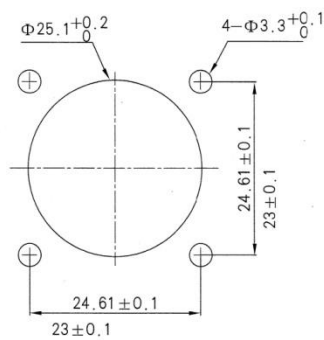
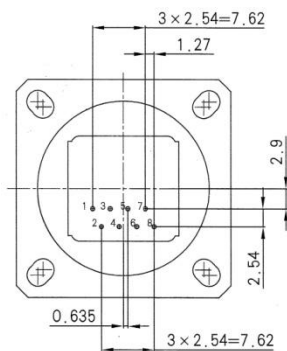


The dimension is same as #14, 16 of MIL-C-24682 I and #14, 15 of MIL-DTL-38999 III.

YW1-20F01B

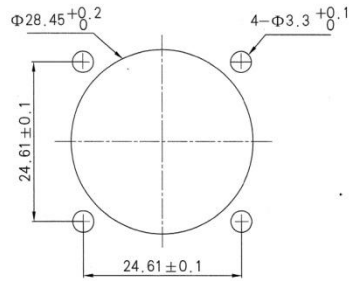


Mounting before board

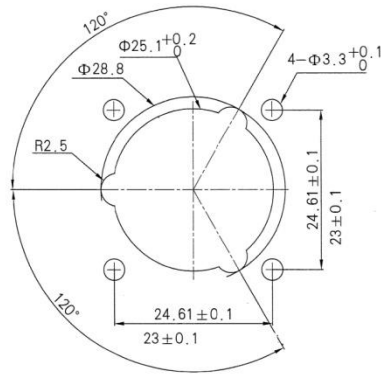


Mounting behind board

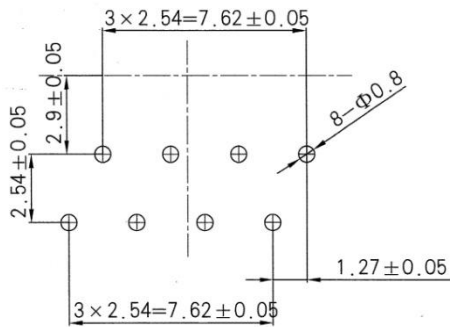
Type I



Type II

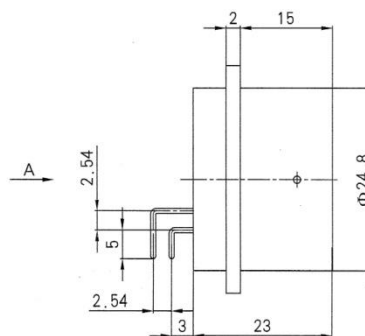
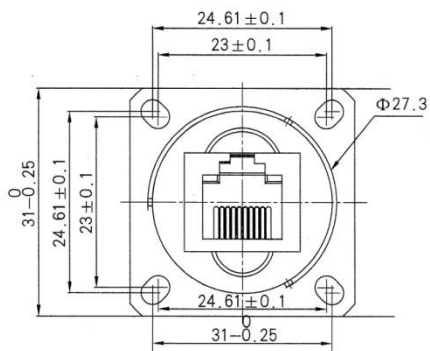


Hole dimension of PCB

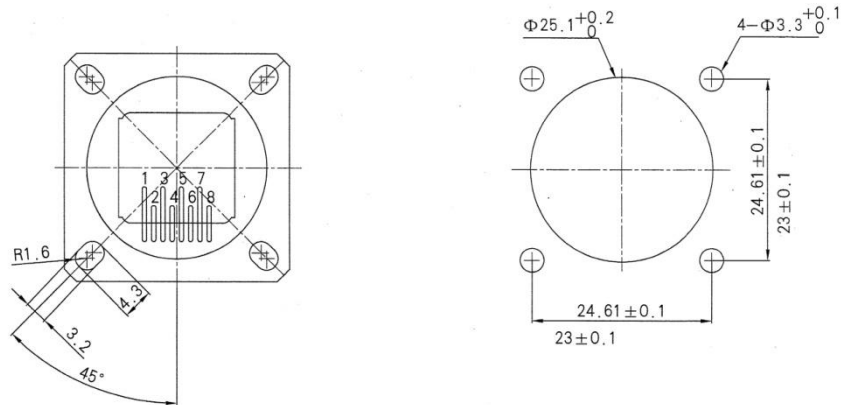


The dimension is same as #14, 16 of MIL-C-24682 I and #14, 15 of MIL-DTL-38999 III.

YW1-20F01W



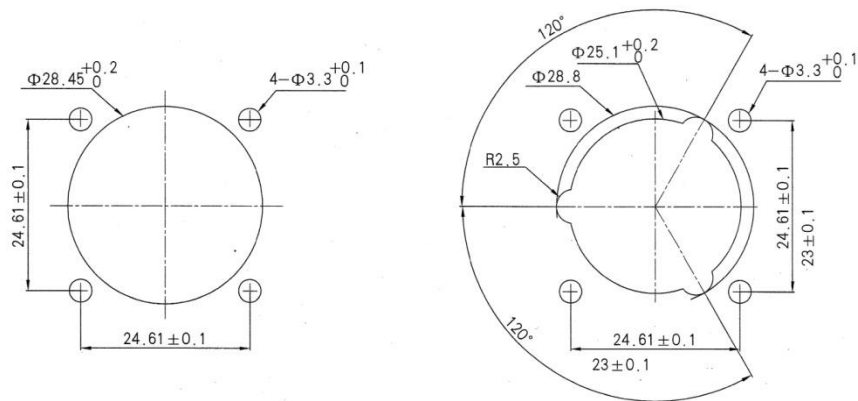
Mounting before board



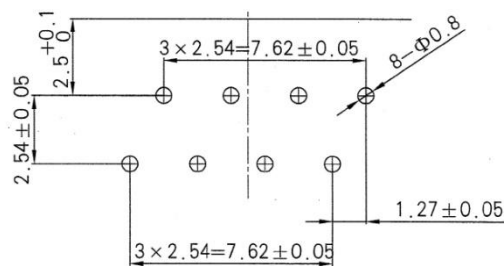
Mounting behind board

Type I

Type II

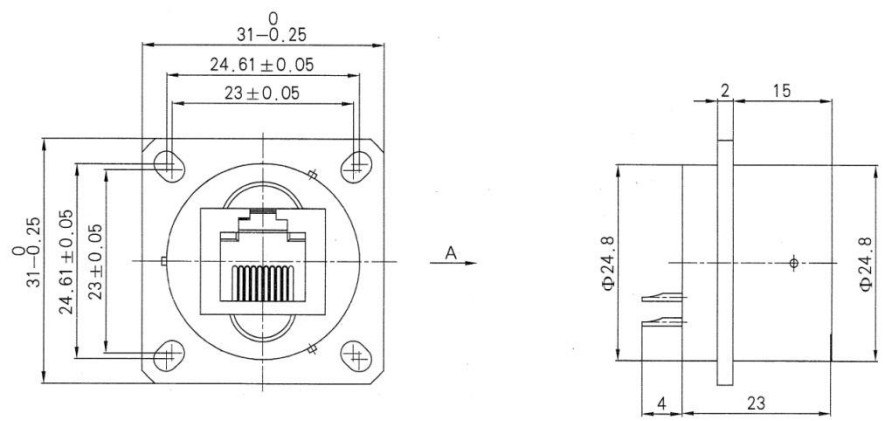


Hole dimension of PCB

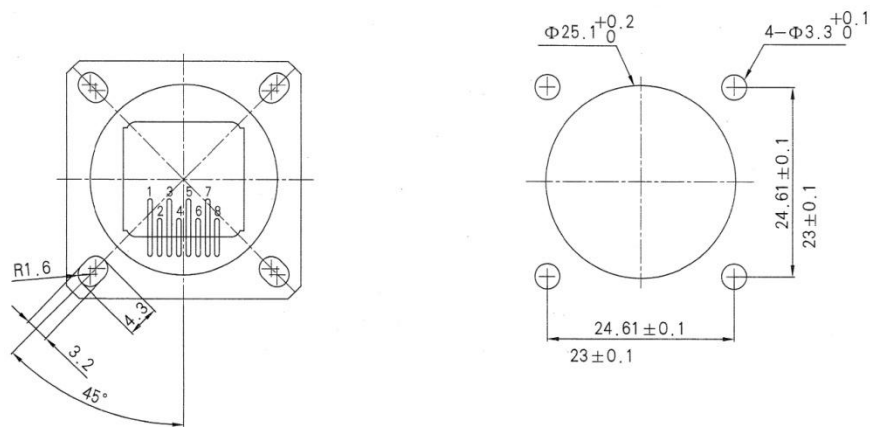


The dimension is same as #14, 16 of MIL-C-24682 I and #14, 15 of MIL-DTL-38999 III.

YW1-20F01S1

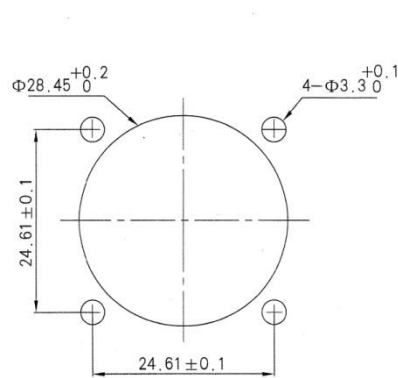


Mounting before board

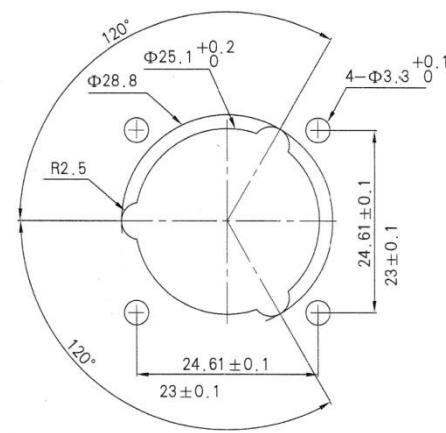


Mounting behind board

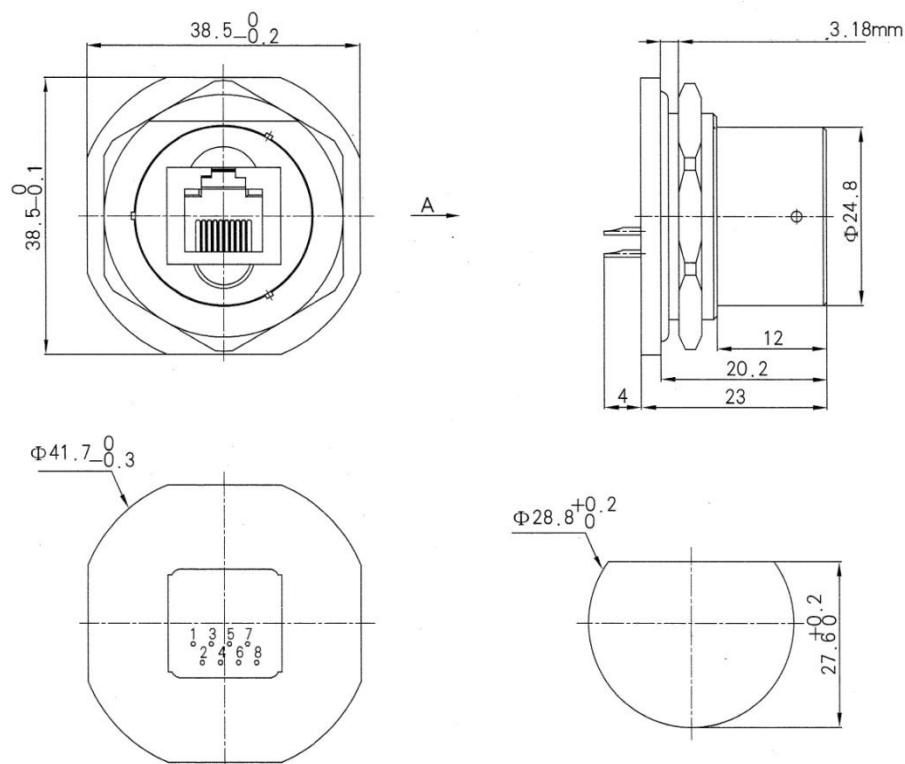
Type I



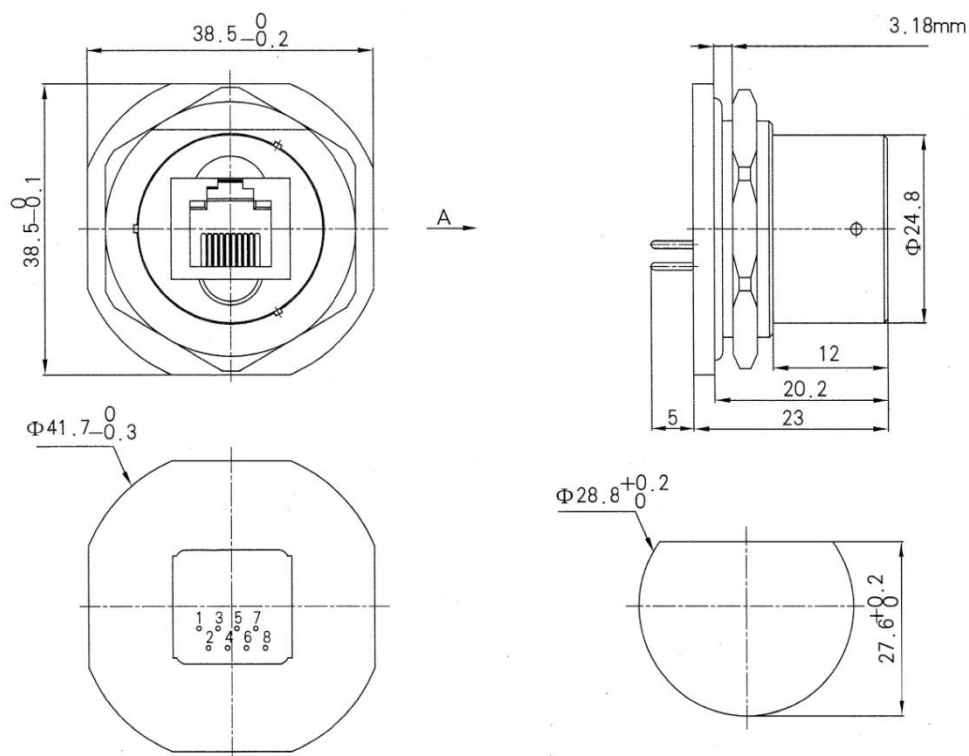
Type II



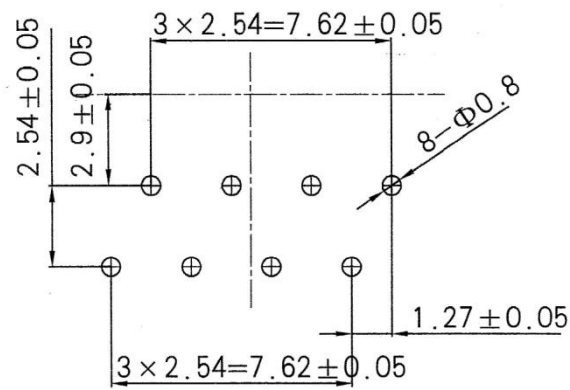
YW1-23F01S1



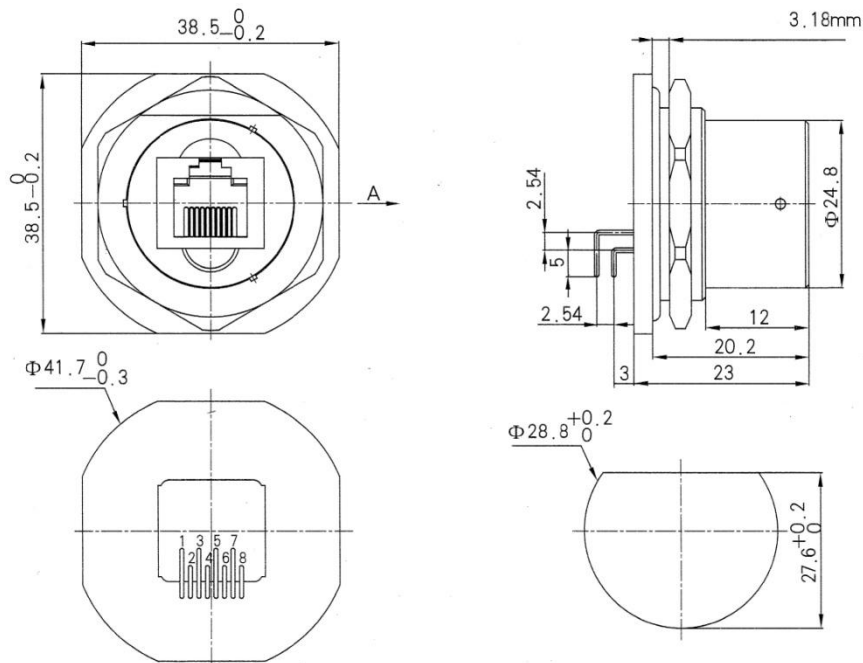
YW1-23F01B



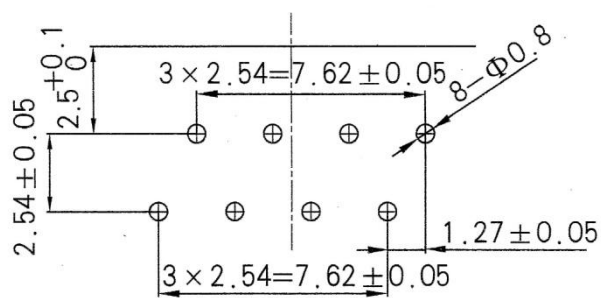
Hole dimension of PCB



YW1-23F01W

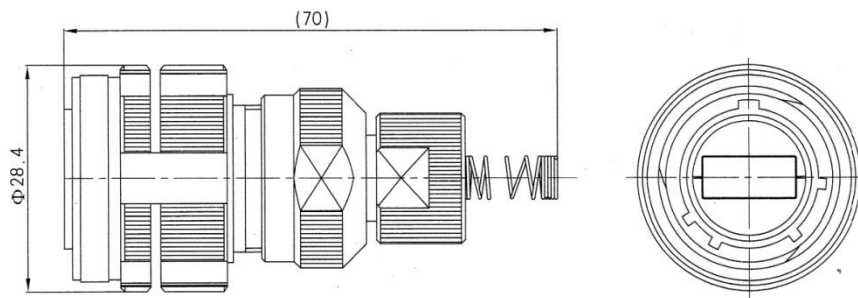


Hole dimension of PCB

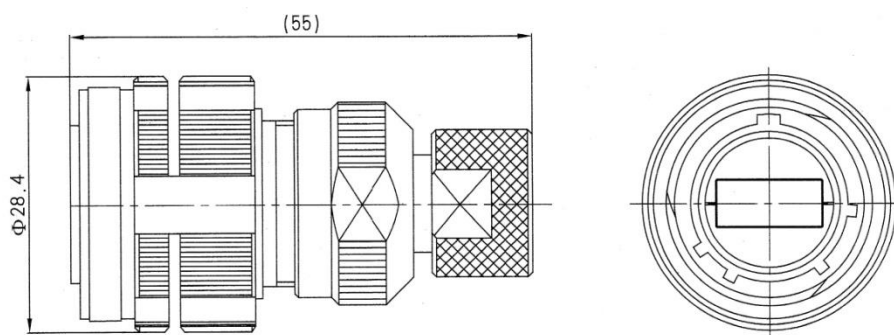


USB

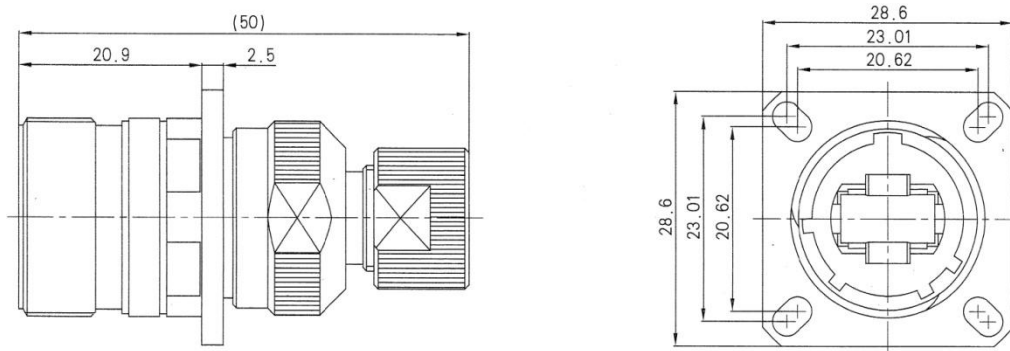
YW3-10F02-01



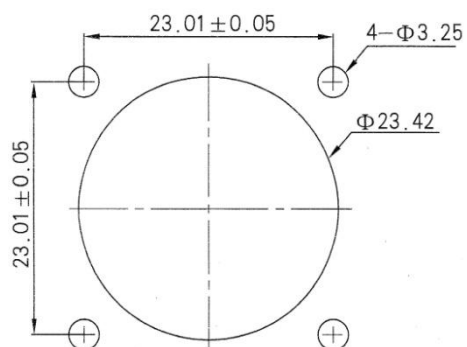
YW3-10F02-02



YW3-20F02S-02

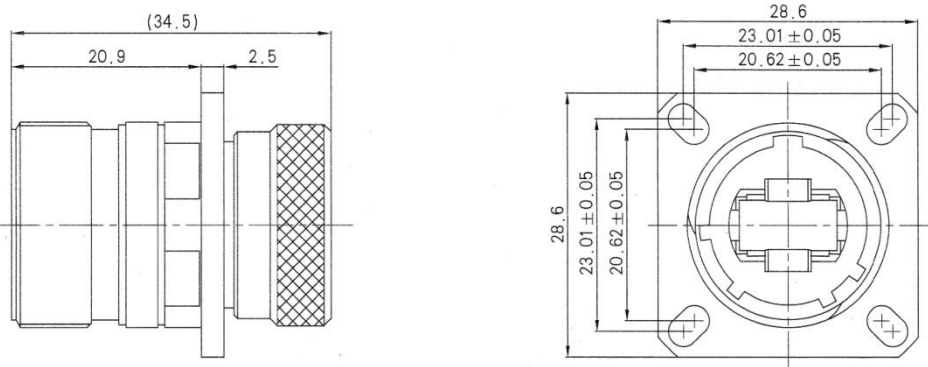


Hole dimension behind board

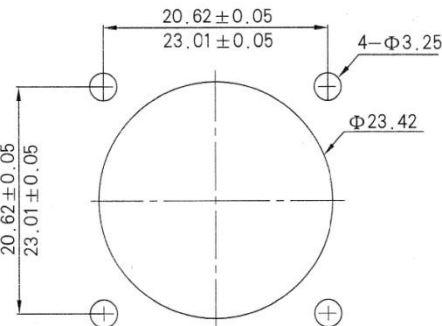


The dimension is same as #13 of MIL-DTL-38999 III.

YW3-20F02S

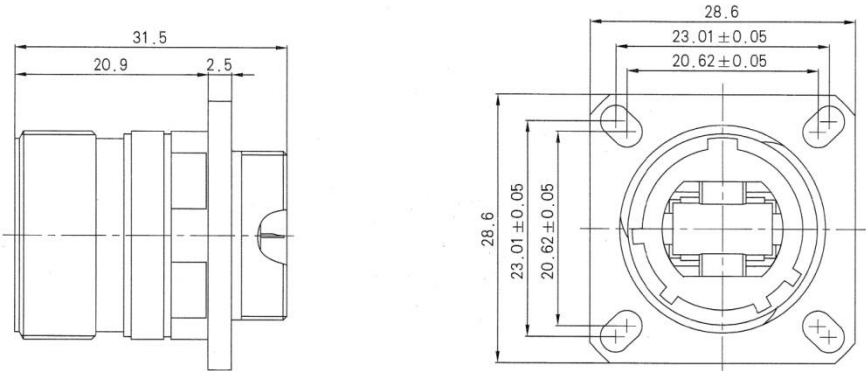


Hole dimension behind board

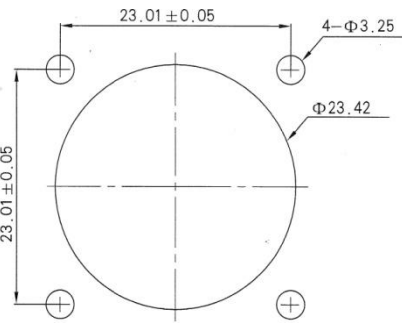


The dimension is same as #13 of MIL-DTL-38999 III.

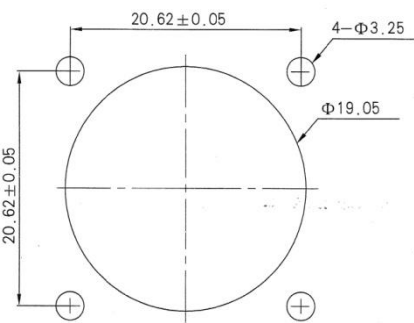
YW3-20F02S1



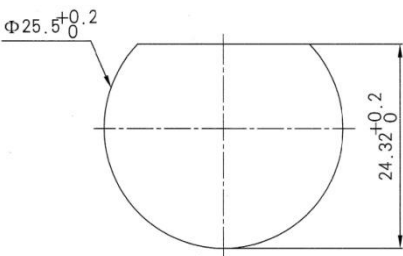
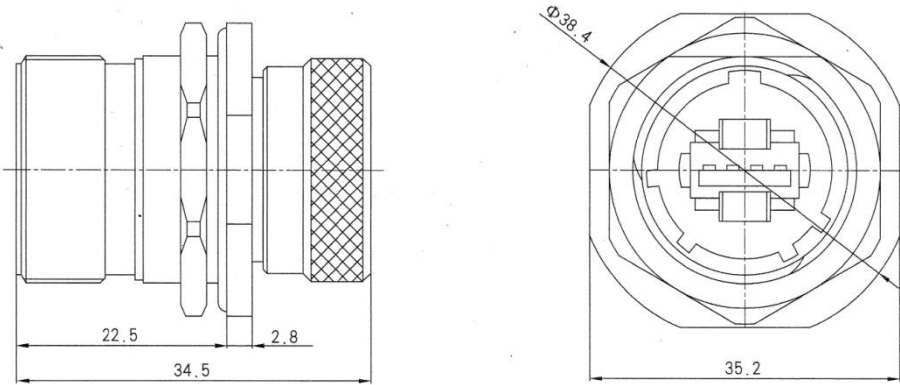
Hole dimension behind board



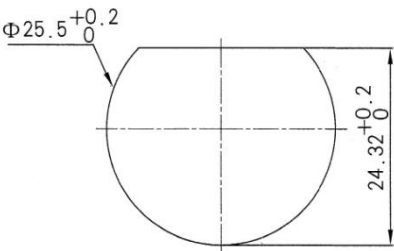
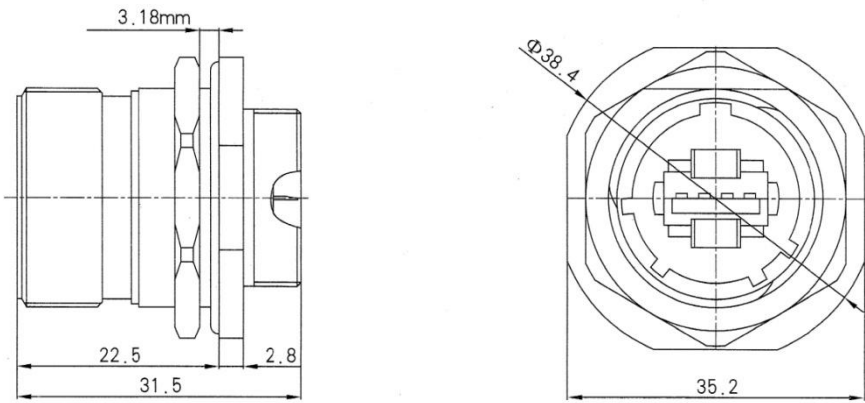
Hole dimension before board



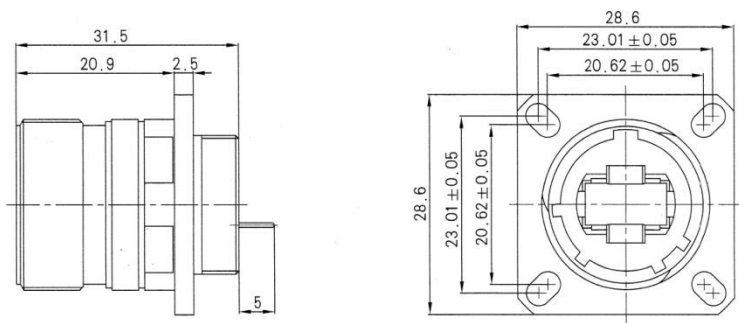
YW3-23F02S



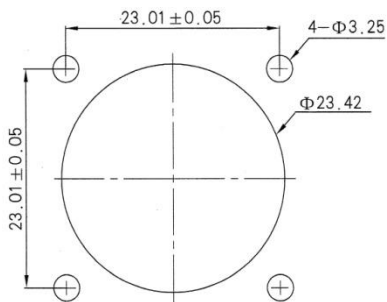
YW3-23F02S1



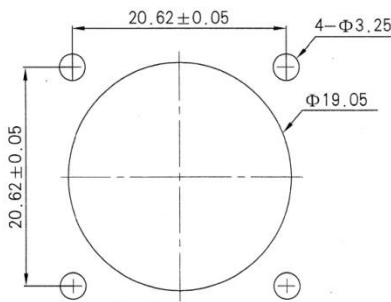
YW3-20F02B



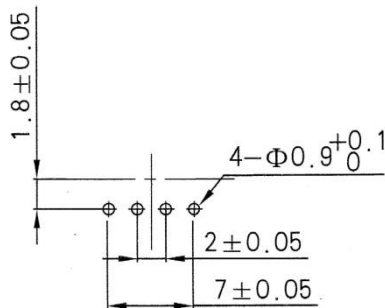
Dimension behind board



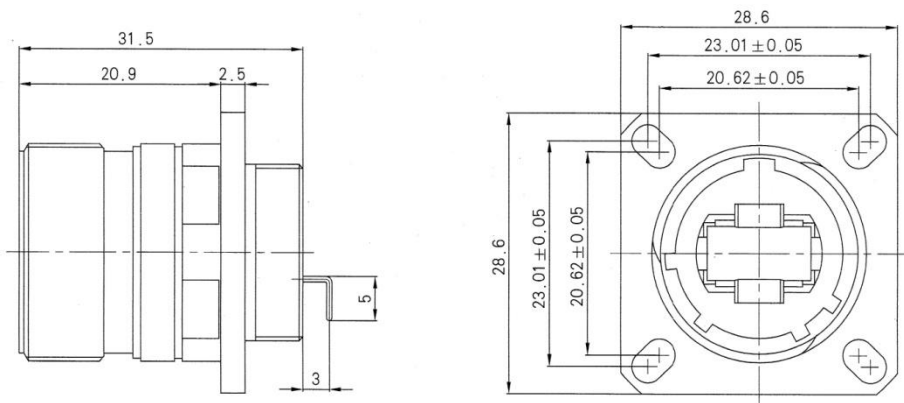
Dimension before board



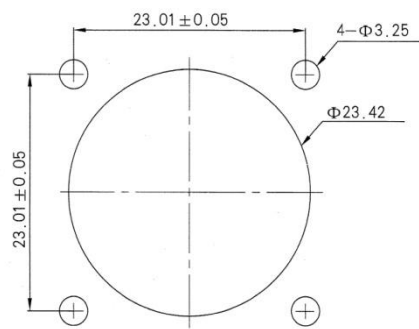
Hole dimension of PCB



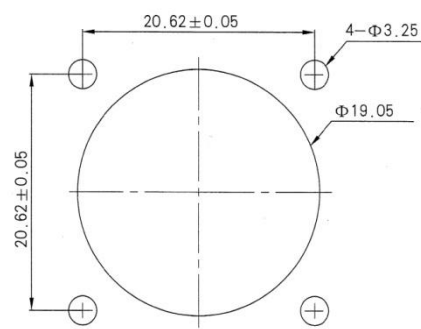
YW3-20F02W



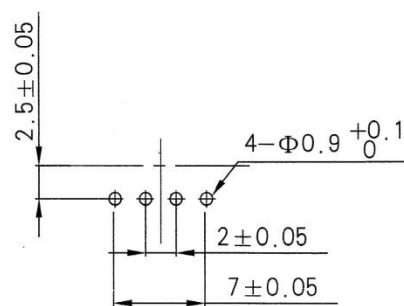
Dimension behind board



Dimension before board



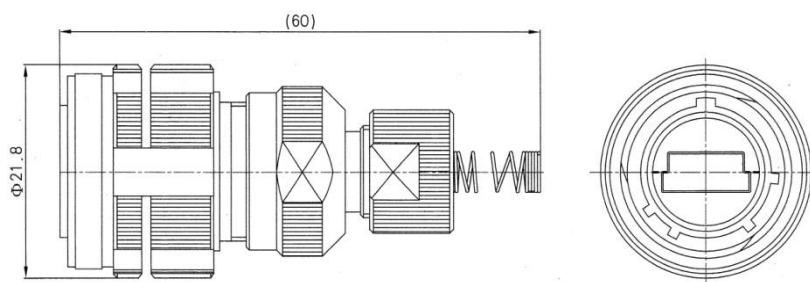
Hole dimension of PCB



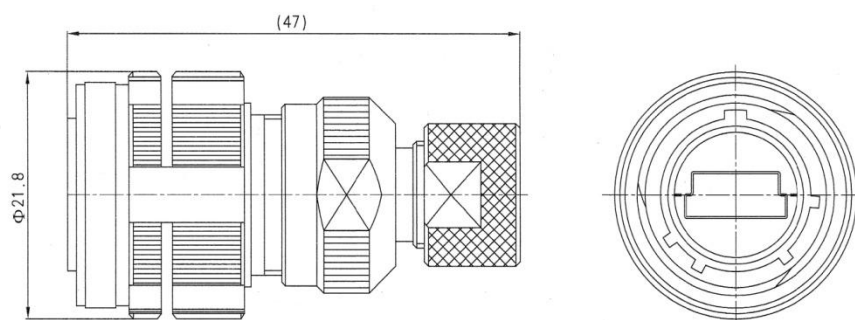
The dimension is same as #13 of MIL-DTL-38999 III.

Mini USB

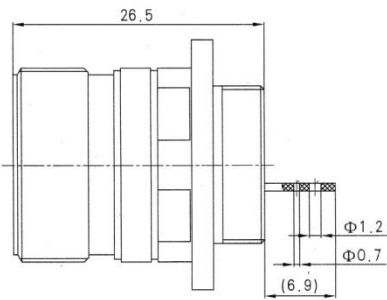
YW3-10F04S-01



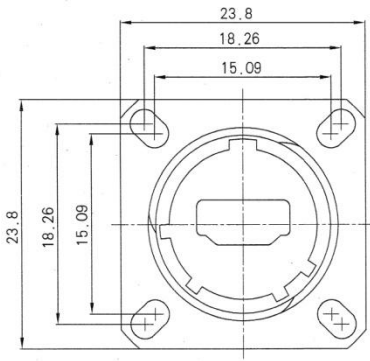
YW3-10F04S-02



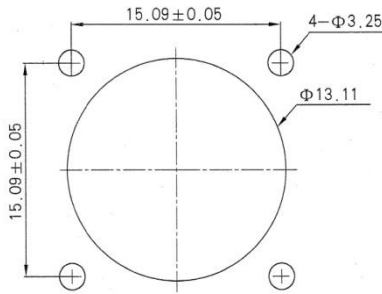
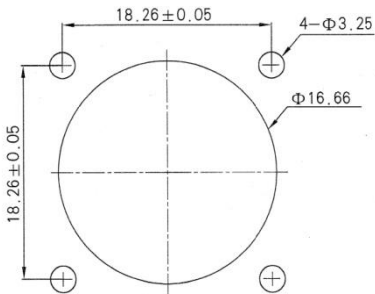
YW3-20F04S



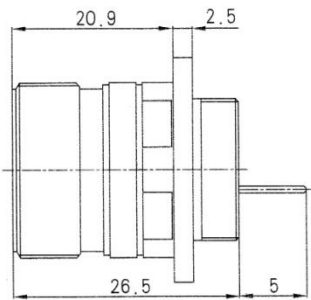
Dimension behind board



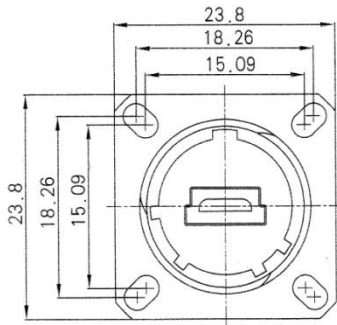
Dimension before board



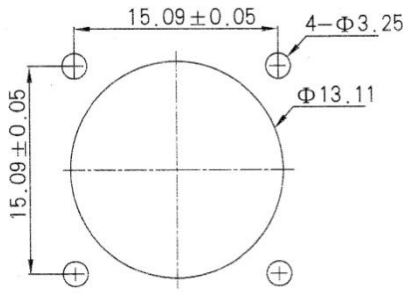
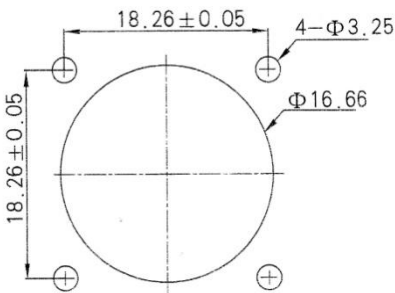
YW3-20F04B



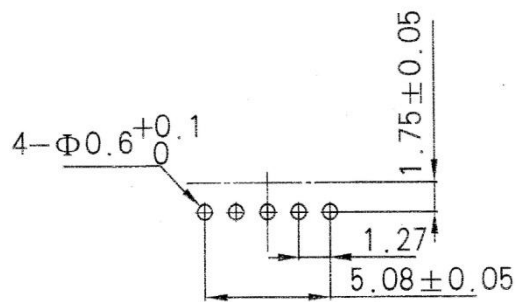
Dimension behind board



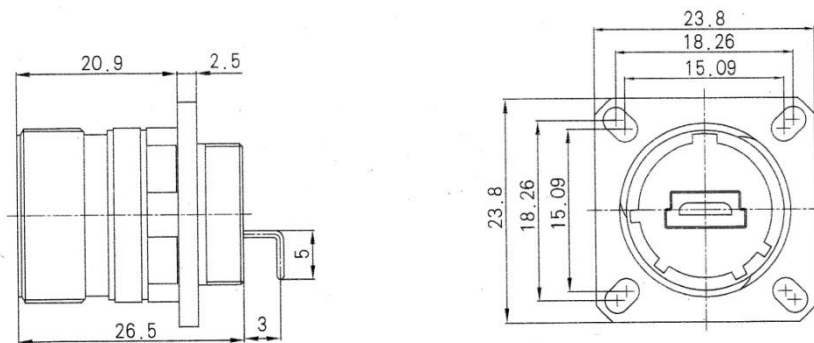
Dimension before board



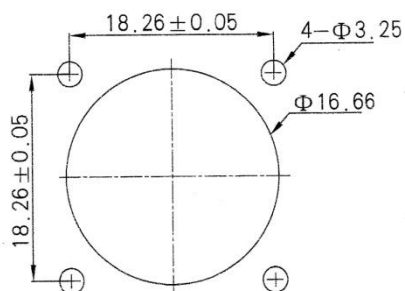
Hole dimension of PCB



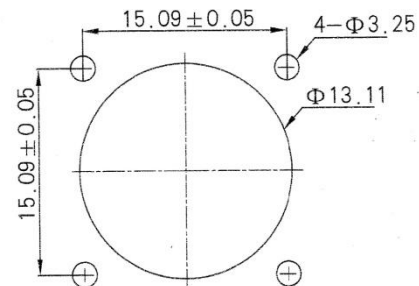
YW3-20F04W



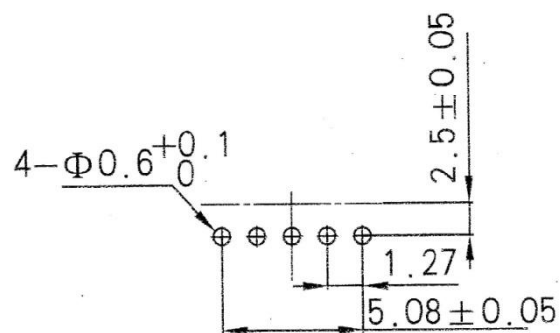
Dimension behind board



Dimension before board



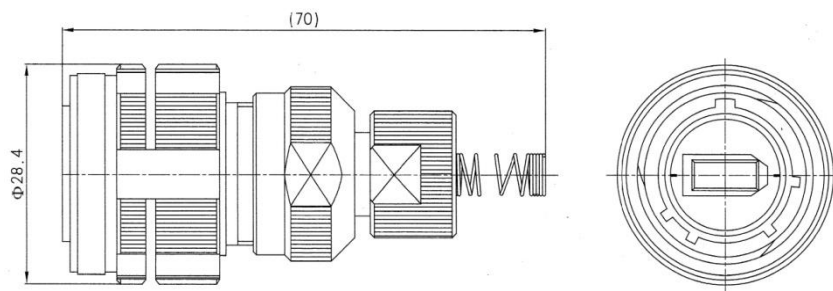
Hole dimension of PCB



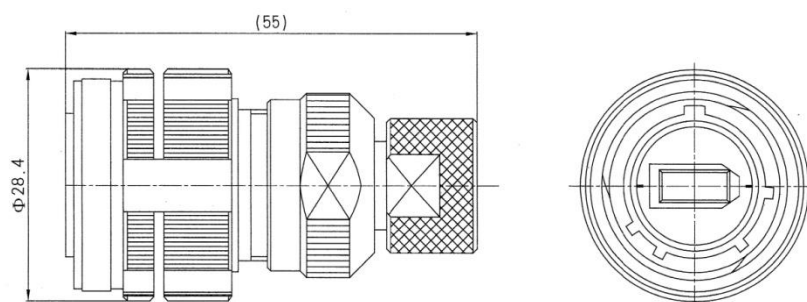
The dimension is same as #9 of MIL-DTL-38999 III.

1394

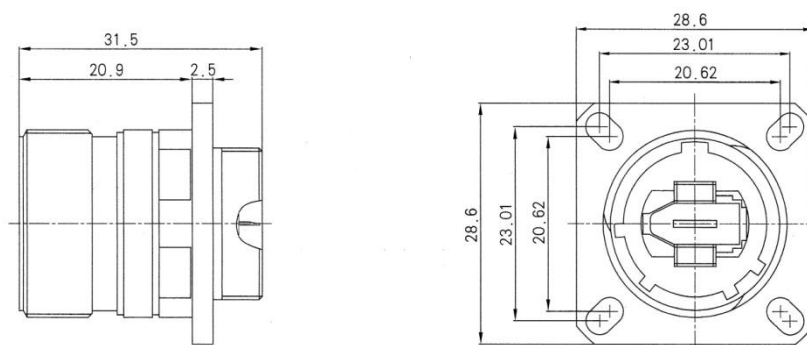
YW3-10F03S-01



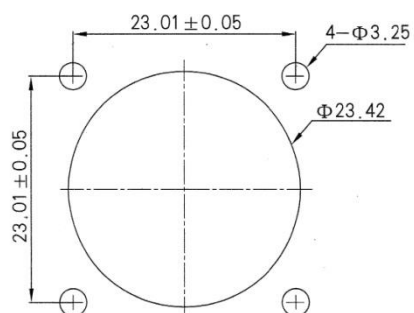
YW3-10F03S-02



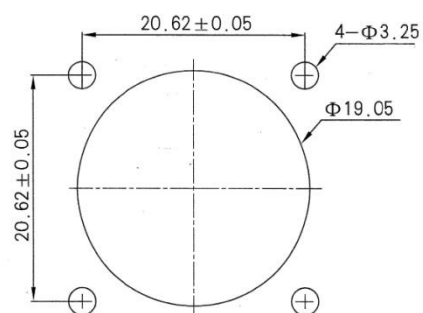
YW3-20F03S1



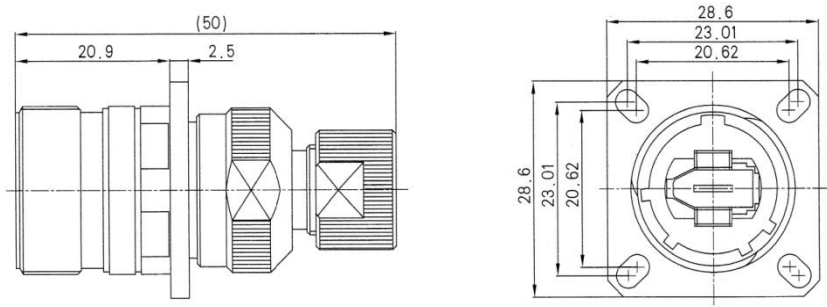
Dimension behind board



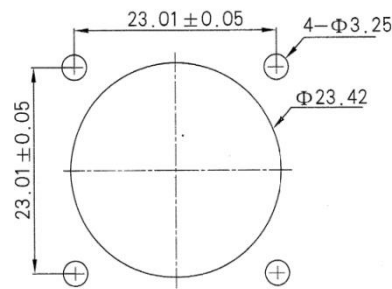
Dimension before board



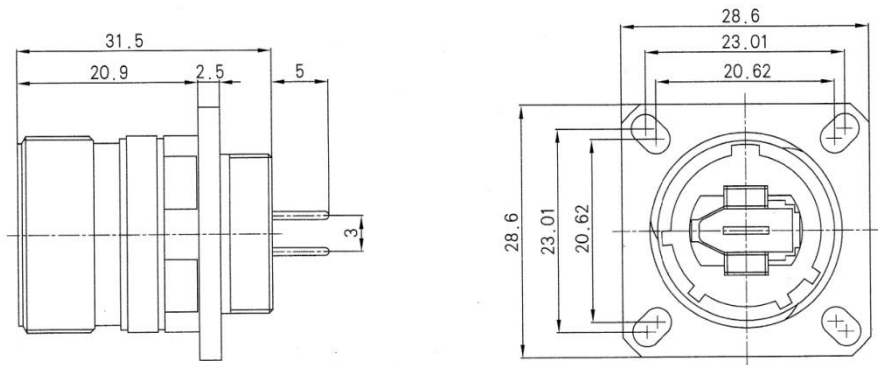
YW3-20F03S-02



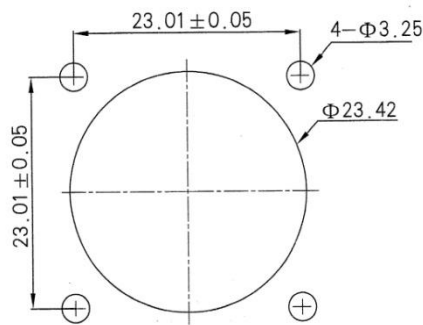
Dimension behind board



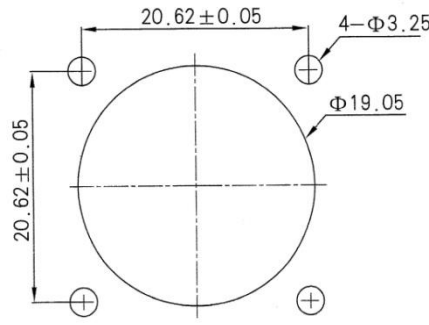
YW3-20F03B



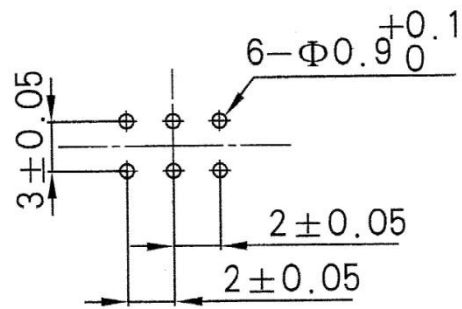
Dimension behind board



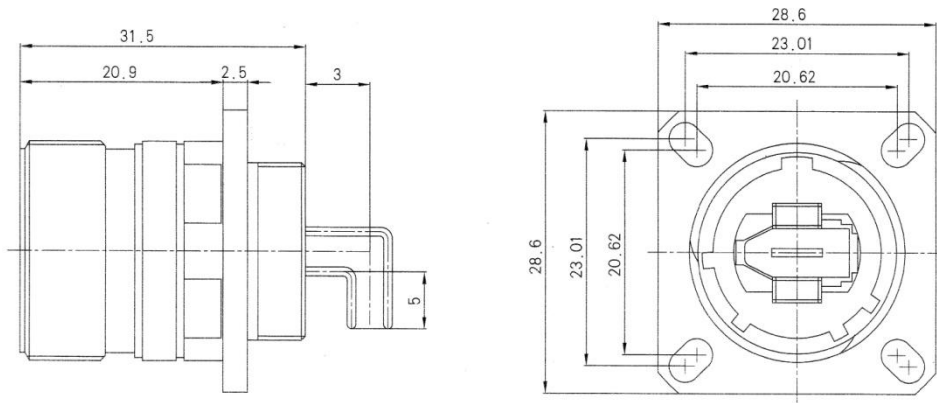
Dimension before board



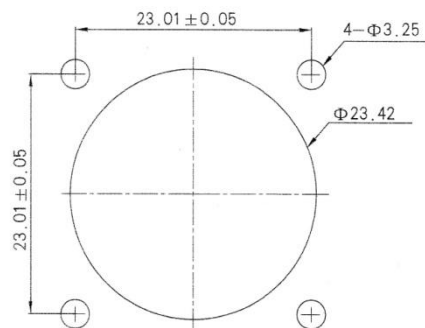
Hole dimension of PCB



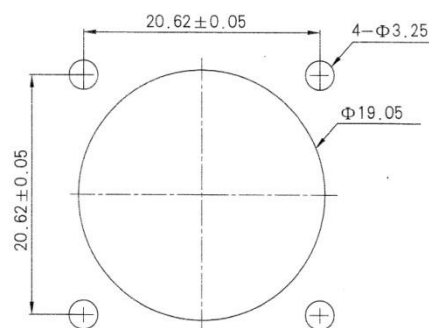
YW3-20F03W



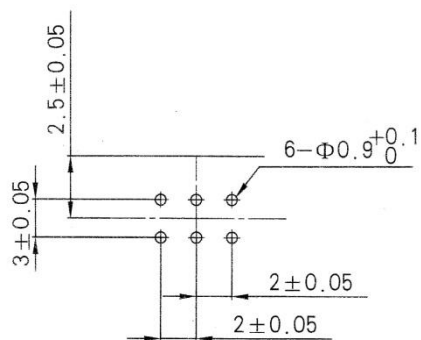
Dimension behind board



Dimension before board



Hole dimension of PCB

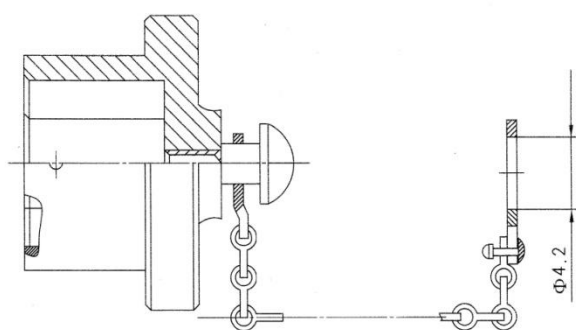


Dust cap

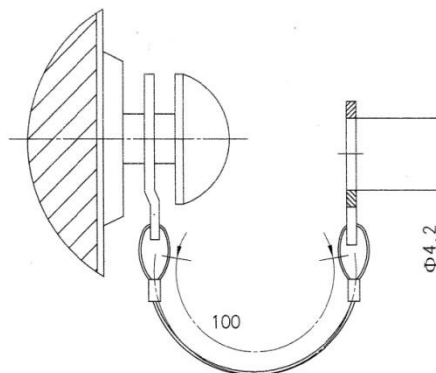
	YW	1	-1	F	01	L	O
Basic series							
Style							
1 = Bayonet							
3 = Triple start thread							
Type							
1 = Dust cap of plug							
2 = Dust cap of receptacle							
Finish							
F = Electroless nickel plating							
B = Cadmium plating							
E = Stainless steel passivated							
H = Black							
L = Olive green							
Type of Internal Interface							
01 = RJ45							
02 = USB							
03 = 1394							
04 = Mini USB							
Chain							
L = Metal chain							
Omit = Nylon chain							
Type of chain mounting							
O = With fixed ring							
Omit = With fixed hole							

Dust cap of plug

Dust-proof with metal chain (YW1-1F01-L)

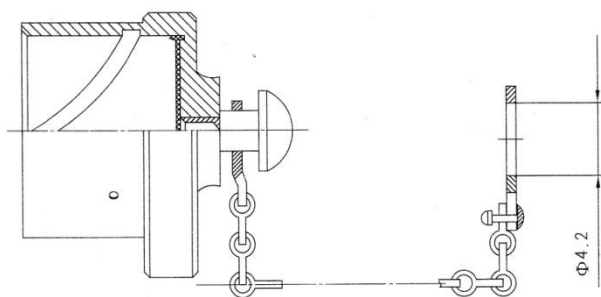


Dust cap with nylon (YW1-1F01)



Dust cap of receptacle

Dust cap with metal chain (YW1-2B01-L)



Dust cap with nylon (YW1-2B01)

