

J14H series rectangle electrical connector



Conform to Chinese military connector standard GJB142A-94. J14H series is extended from J14 series, designed as solder contact and higher density of contact.

Part number

	J14H	-9	Z	J	B
Basic series					
Number of contact					
9, 19, 25, 37, 52, 74					
Type of plug and receptacle					
T = Plug					
Z = Receptacle					
Type of contact					
J = Pin					
K = Socket					
Type of mounting					
B = Panel mounting					
L = Cable mounting					

Performance specification

Temperature rating: -55 °C ~ +125 °C

Relative humidity: at 40 °C \pm 2 °C, 90% ~ 95%

Vibration: at 10 Hz~2000 Hz, acceleration 196 m/s²

Shock: 980 m/s²

Atmospheric pressure: 101.3 KPa ~ 4.39 KPa

Acceleration: 780 m/s²

Electrical performance

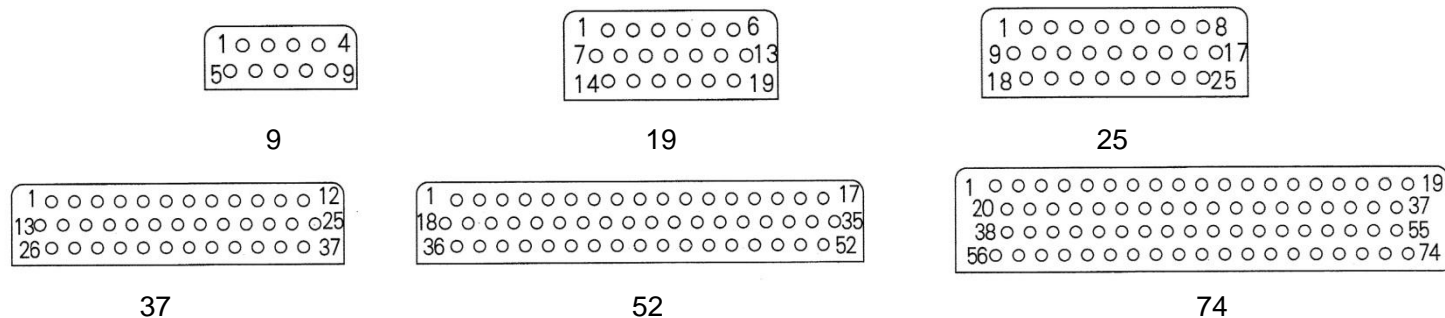
Rated current: 2 A

Contact resistance: \leq 15 m Ω

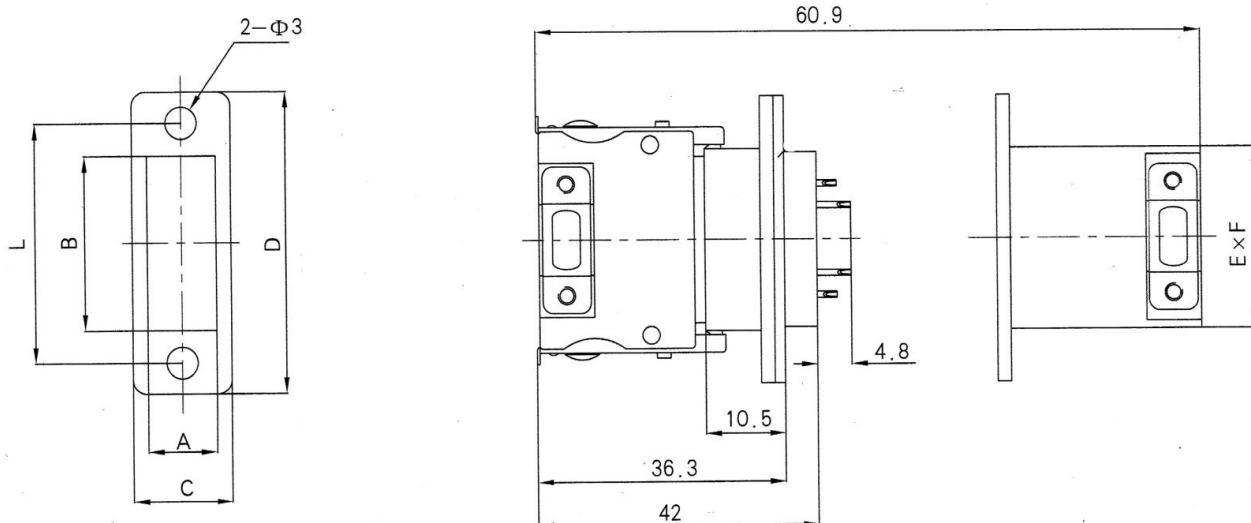
Withstanding voltage: \leq 800 V

Endurance: \geq 500 cycles

Contact layout



Shell size



Contact number	L±0.1	A	B	C	D	E	F
9	23	5.0	14.2	10	28	15.7	7
19	27	8.1	18.2	12	32	20.2	10
25	30.4	8.1	21.6	12	35.4	23.6	10
37	37	8.1	28.2	12	42	30.2	10
52	46	8.1	37.2	12	51	39.2	10
74	48	9.7	39.2	12.5	53	41.2	11.7