

J36C series rectangle electrical connector



Conform to Chinese military connector standard GJB142A-94. J36C series is extended from J36 series, the type of termination is solder and type of locking is by bolt.

Part number

	J36C	-38	T	K	W
Basic series					
Contact number					
38, 62					
Type of connector					
T = Plug					
Z = Receptacle					
Type of contact					
K = Socket					
J = Pin					
Type of outlet					
W = 90° elbow					
L = Cable					

Performance specifications

Temperature: -55 °C ~ +125 °C

Relative humidity: at 40 °C \pm 2 °C, 90% ~ 95%

Atmospheric pressure: 101.3 KPa ~ 1.33 Pa

Vibration: at 10Hz ~ 2000Hz, acceleration 245 m/s²

Shock: 980 m/s²

Electrical performance

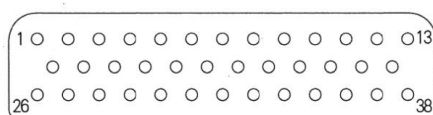
Rated current: 5A

Insulation resistance: \geq 5000 M Ω

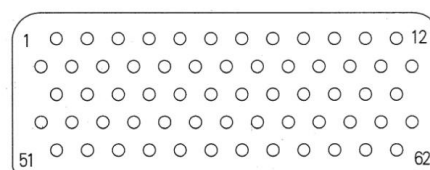
Withstanding voltage: 1000 V

Endurance: \geq 500 cycles

Contact layout



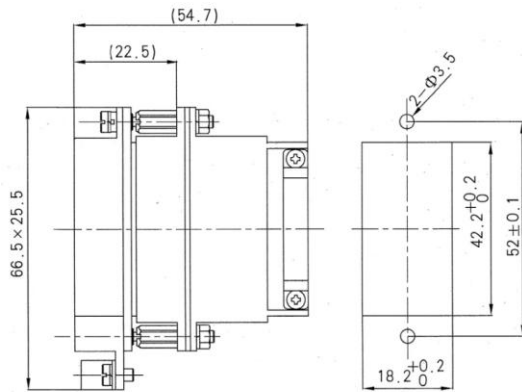
38



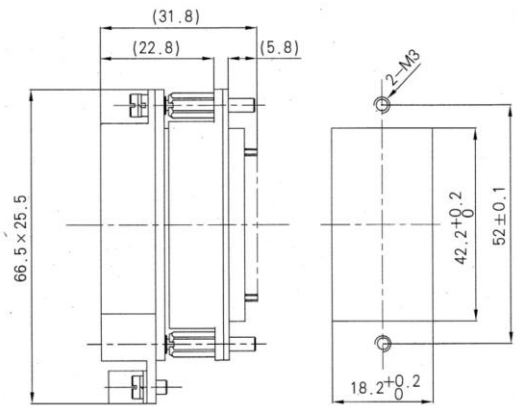
62

Shell size

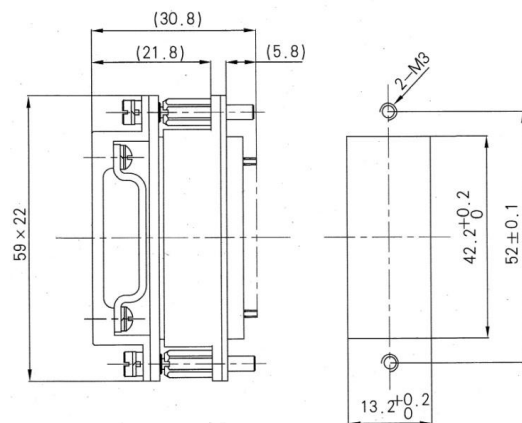
J36C-62T2KW/ZJL



J36C-62T2KW/ZJ



J36C-38TKW/ZJ



J36C-62T3KW/ZJ

