

Y3B series circular electrical connector



Conform to Chinese military connector standard GJB2905-2004 and GJB101A-97. Y3B series is the upgrade from Y3A series, its working current is bigger than Y3A series. Also it is designed as push-pull quick coupling and release.

Part number

	Y3B	12	04	T	J	2
Basic series						
Shell No.						
10, 12, 16, 20						
Contact number						
01, 03, 04, 07, 12, 19						
Type of connector						
T = Plug						
Z = Receptacle						
Type of contact						
J = Pin						
K = Socket						
Type of back shell						
2 = Jam cable connecting						
2a = Big jam cable connecting (only for shell 20)						
3 = Reperfusion for sealant						
5 = Heat shrinkable sleeve series I						
5a = Heat shrinkable sleeve series II						
10 = Square flange						

Performance specification

Operating temperature range: -55 °C ~ +125 °C

Shock: Max acceleration 490 m/s²

Relative humidity: 90 ~ 95% at 40 ± °C

Endurance: ≥ 500 cycles

Contact resistance and current rating:

Diameter (mm)	Φ 1.5	Φ 2.5	Φ 3.5	Φ 5.0	Φ 10.0
Current (A)	10	25	50	60	200
Resistance (mΩ)	≤ 3	≤ 1	≤ 1	≤ 1	≤ 1

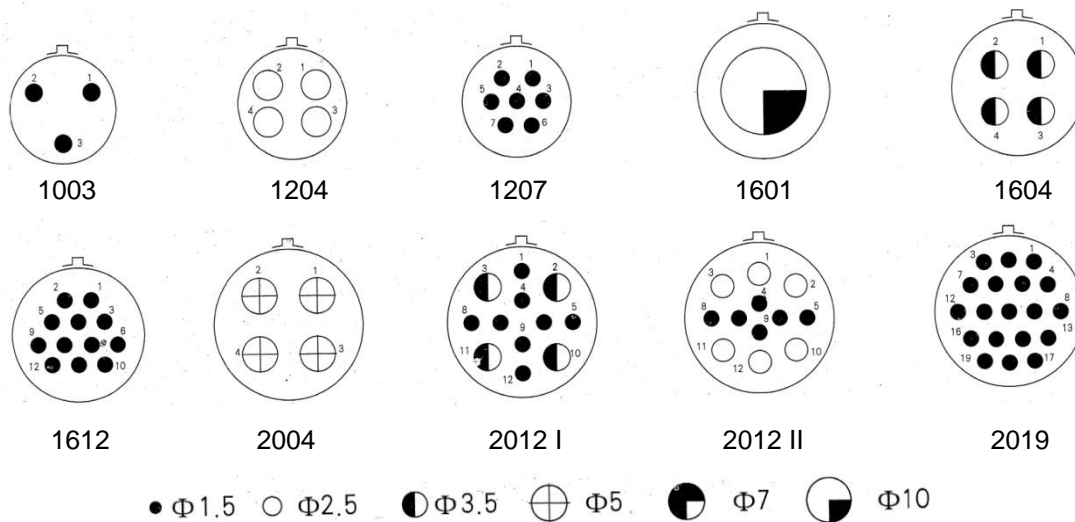
Insulation resistance:

Sea level	High humidity	High temperature
≥ 1000MΩ	≥ 20MΩ	≥ 500MΩ

Withstanding voltage:

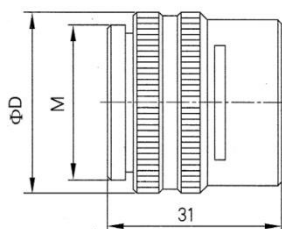
Y3B series	Voltage (V)
Sea level	1000
21000m	250

Contact layout



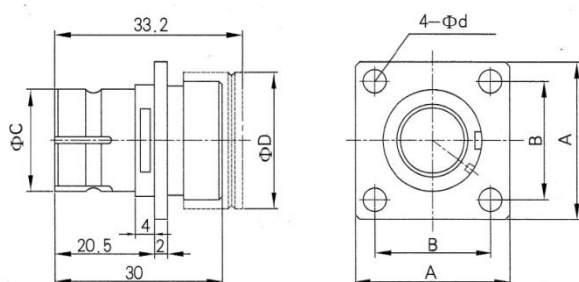
Shell size

Plug



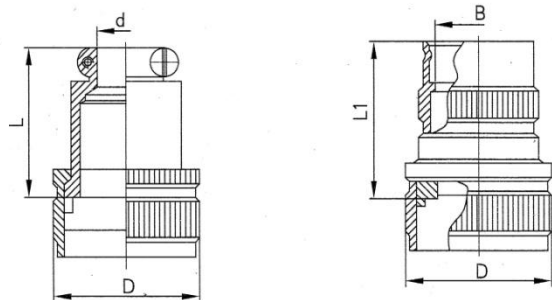
Shell No.	Thread M	Φ D
10	M16×1.0	24
12	M20×1.0	27
16	M27×1.0	33
20	M33×1.5	39

Receptacle



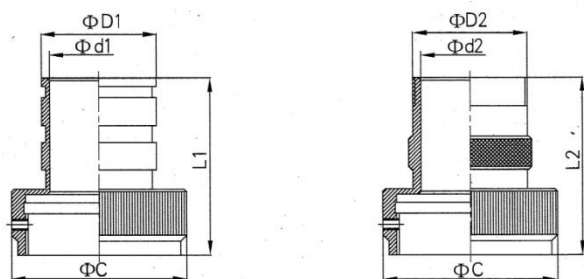
Shell No.	A	B	Φ C	Φ D	Φ d
10	24	18 ± 0.15	15.4	18.5	3.3
12	27	21 ± 0.15	18.4	22.5	3.3
16	32	26 ± 0.15	24.4	29.5	3.3
20	42	33 ± 0.15	30.4	35.5	5.5

Back shell



Shell No.		ΦD	Φd	L	ΦB	L1
10		18.5	7.0	17.0	9	18.0
12		22.5	10.0	17.0	13	18.0
16		29.5	13.5	25.0	17	28.5
20	For 2	35.5	20.0	26.5	23	28.5
	For 2a	35.5	15.5	23.0	---	---

Heat shrinkable sleeve



Shell No.	$\Phi D1$	$\Phi d1$	ΦC	L1	$\Phi D2$	$\Phi d2$	L2
10	14	10	23	27	M14×1.0	10.0	33
12	18	13	26	30	M19×1.0	15.0	33
16	21	18	32	32	M22×1.0	18.0	33
20	28	24	38	35	M32×1.5	27.7	33